



***ECO STRIPPER  
Operating Manual***

***Read before use and keep safe***

**Table of Contents**

1.0	Technical Data	Page 2
2.0	Safety	Page 2
3.0	Safety Instructions	Page 2
4.0	Maintenance	Page 4
5.0	Use	Page 4
6.0	Information about various floorings	Page 5
7.0	Trouble Shooting	Page 5
8.0	Spare Parts/Schematic	Page 6
10.0	Blade Selection	Page 7



**(800) 624-2408 (530) 626-9386 Fax (530) 626-5144  
6686 Merchandise Way Diamond Springs, Ca 95619  
[www.sineqco.com](http://www.sineqco.com)**

## 1.0 Technical data/technical description

Power supply	120V AC
Power consumption	2000W, 17A with current limiter
Number of strokes	6300 strokes/min
Sound pressure level	88 dB(A)
Sound energy level	101 dB(A)
Hand/Arm-Vibration	16 m/s <sup>2</sup>
Weight	34 lbs.
Comes with	Eco Stripper, 1 blade, ear & eye protection and nut driver. Case is optional.

## 2.0 Safety

The Sinclair Eco Stripper has Class 2 protective insulation. It meets the following safety specifications:

DIN VDE 0740, CENELEC HD 400,  
IEC 745, VBG 7j (National spec)

The machine has radio interference suppression to these standards  
76/889/EWG, 87/308EWG  
EN 55014

## 3.0 Safety Instructions

Disconnect the power supply before any maintenance is carried out.

Use only recommended blades and ensure it is sharp before starting.

Only qualified personnel should undertake maintenance. Use only genuine Sinclair spare parts.

**CAUTION!!! Always wear ear and eye protectors! CAUTION!!!**

Using this machine without ear and eye protectors may jeopardize or harm your health. It may harm especially your ears and increase the risk of an accident.

**\* PLEASE READ DETAILED SAFETY INSTRUCTIONS ON COLORED SHEET BEFORE USING MACHINE!**

### **3.1 Introduction**

This operating manual should be used to get the most benefit from your Eco Stripper. Following these instructions will both extend the life of your machine and reduce repair costs.

Please make sure any user of the machine is fully familiar with the instructions for use before allowing work to start.

### **3.2 Danger while working with the machine**

The Eco Stripper is designed to the highest technical standards. Incorrect use can be dangerous!  
Use this machine only

- **as instructed in this operating manual**
- **with the machine in perfect working order**

Disturbances that could impair safety have to be eliminated at once.

### **3.3 Restriction of use**

The Eco Stripper is exclusively for removing bonded floor covering in dry environments. It should not be used for any other purpose. Sinclair Equipment Company cannot be held responsible for any damage or loss caused by incorrect use.

Correct use also includes:

- to take care of all directions from the operating manual and
- the execution of maintenance and service.

### **3.4 Genuine Spare Parts**

Spare parts and accessories are manufactured uniquely for the Eco Stripper. It must be emphasized that parts obtained from unauthorized sources must not be used.

Sinclair Equipment Company cannot be held responsible for the performance of or any damage arising from the use of machines in which genuine spare parts have not been used.

**This is particularly important with replacement blades.**

## 4.0 Maintenance

The Eco Stripper is virtually maintenance free.

- **Check brushes periodically to prevent damage to armature.**
- **Changing the blade**

Disconnect the power supply and put on the blade protection before changing the blade.

Loosen the screws of the blade mounting, remove the blade and replace it.

Make sure that the blade is fitting in exactly the same position of the old one.

## 5.0 Use

### Starting

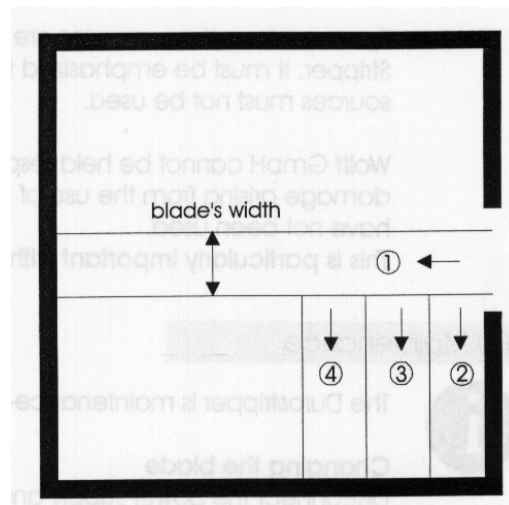
Mount the long internal tube with 2 screws to the handle support. Telescope the outer tube over it. The length of the handle may be adjusted by sliding the outer tube. Place the handle into the end of the tube and latch the locking.

For your safety the Eco Stripper comes with the blade not mounted. Make sure that the power supply is disconnected before mounting the blade. Place the sharp bevel of the blade face up when removing from concrete surfaces and face down when removing from wood or particleboard. The blade must sit close to its support, and is fixed with screws from the bottom side.

### Use

The Eco Stripper removes bonded, flexible floor covering in strips. It uses an oscillating system, i.e. the blade performs a circular movement. This movement results in a lateral cutting. This could make the stripper swing sideways if you want to remove stiff flooring or aggressive adhesive. In this case using the device may be limited due to its system.

Before starting work, the flooring needs to be cut into strips of the blade's width. To begin cut one strip crosswise. Then lift the flooring slightly in order to get the blade underneath it. We recommend to cut the first strip at right angles to the main working direction. By so doing access to the next strips is made easier.



Cut the strips smaller if the floor covering is bonded very securely, e.g. with an epoxy adhesive.

The floor pavement sharpens the blades. Therefore the blade has to be changed only if it is twisted or becomes worn.

## 6.0 Information about various floorings

Main applications of the Eco Stripper are carpets with foam backing, CV-floorings, PVC-floorings and light carpets.

### **CV-floorings, PVC-floorings and carpets without foam backing**

Cut strips according to the blade width. Check from time to time if the blade is straight.

### **Carpets with foam backing**

Use sharp blades only! Remove upper layer with carpet clamp. Remove the foam backing with the stripper. Remove foam across the width if you have an uneven sub-floor.

### **Semi-flexible tiles**

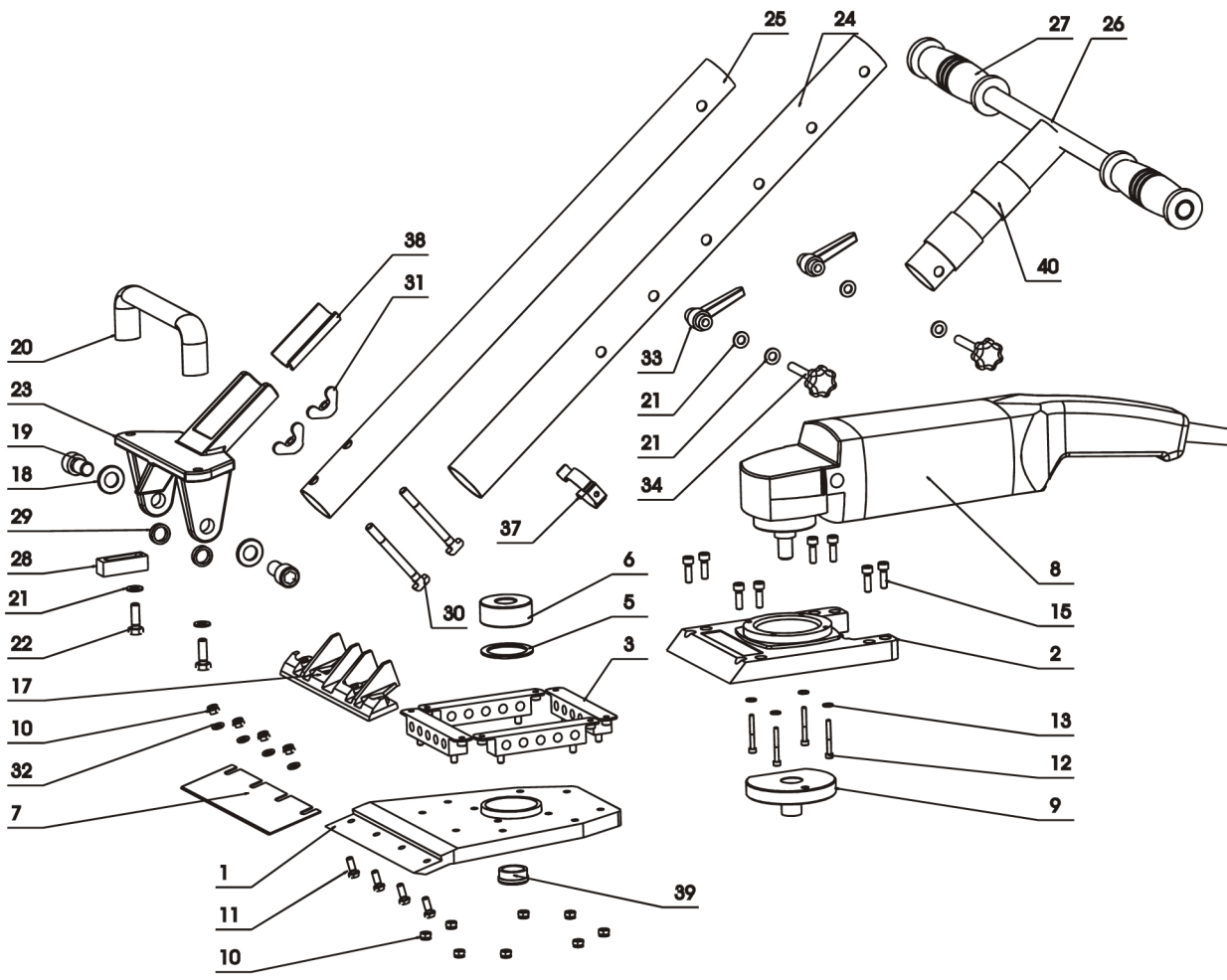
These tiles can be removed without pre-cutting, if they are not bonded extremely tight.

## 7.0 Trouble shooting

<u>Trouble</u>	<u>Eventual cause</u>	<u>Elimination</u>
Machine does not start	- Power supply disconnected - blown fuse - defective cable - defective plug	Have machine repaired by a qualified electrician, resp. change parts
Undue force necessary to strip the flooring	Blade is blunt	Change blades
Excessive vibration	Expendable parts are worn out	Return machine for service and/or repair

## Eco-Stripper

<b>Schematic #</b>	<b>Description</b>	<b>Part #</b>
1	Striker foot casting	D015221
2	Bearing plate	D015224
3	Rubber bearings	D014931
5	Counter balance weight 42X52X2	E017657
6	Ball bearing	D014711
7	Blade	SEE CATALOG
8	Motor 110V	E017823
9	Eccentric disc	D015225
10	Nut M6	D014815
11	Cap screw M6X25	D00912415B
12	Hexagon screw M5X35	T014721
13	Safety washer M4	T014858
15	Hexagon screw M6X20	D014752
17	Blade holder	E015223
18	Safety washer M14	D014863
19	Hexagon screw M14X25	D014745
20	Hand grip	D014916
21	Safety washer M8	D014860
22	Counter sunk screw M8X25	D009164300
23	Grip frame	D015227
24	Outer tube of Handle (Black)	D015232
25	Internal tube of Handle (Silver)	D015226
26	Handle T-Bar for long handle	D015026
27	Grip covering	D009803000
28	Fixation	E074500050
29	Spacer ring 4.5mm	E021047690
30	T-head bolt M8X70	D014768
31	Wing Nut M8	D014824
32	Washer 6.4	D014859
33	Clamping Lever	D014877
34	Star Grip Screw	D014919
37	Cable clamp	D014940
38	Rubber Sleeve	D014932
	<b>PARTS NOT SHOWN</b>	
	Carbon Brush	E018699
	On/Off Switch	E014677
	Tool Kit	D015025



# TURBO, EXTRO, SUPER, BRAVO, DURO & ECO STRIPPER SUGGESTED BLADE SELECTION

## **BRAVO/DURO/ECO STRIPPER**

**#10-4906 8”Rigid.** Our standard blade for removal of vinyl, carpet, adhesive, etc. Bevel edge of blade should be up for concrete and down for wood sub-surfaces. Precutting of carpet and vinyl needed.

**#10-4904 8”Flexible.** Same as above, yet for uneven concrete surfaces and some soft foam back carpet.

**#10-4907T 8”Tile Blade.** For use on VAT and VCT tile. Prevents tile from jamming in between blade and blade holder. A must for tile removal to protect blade holder.

**#10-4909 8”Razor Blade Attachment.** An adapter to secure razor blades for removal of adhesives, paints and thin films. Inexpensive and an excellent choice for complete clean up after floorcovering removal.

**#10-4903 8”X 5”Rigid.** Ideal for hard to reach areas such as toe kicks, under radiators, etc. Also used for clean up of small areas of parquet, ceramic, etc.

**#10-4906D 8”X 2.5”Rigid Self Dicing.** For use on carpet, rubber or vinyl. A real time saver, on pre-cutting necessary since blade will cut strips with knife edged sides.

## **TURBO/EXTRO/SUPER STRIPPER**

**\*Super Stripper uses 12” Blades Only**

**#10-4801D 14”Self-Dicing Blade.** For use on carpet, rubber or vinyl. A real time saver, on pre-cutting necessary since blade will cut strips with knife edged sides.

**#10-4651T 12”Tile Blade.** For use on VAT and VCT tile. Prevents tile from jamming in between blade and blade holder. A must for tile removal to protect blade holder.

**#10-4807 14”X 5”Ceramic/Parquet Blade.** Ideal for removal for ceramic tile, marble, parquet, and other wood floors. Precutting needed for plank floors.

**#10-4809 Special Ceramic/Parquet Blade.** This ¼” thick heavy duty blade is designed especially for the ceramic tile and hardwood/parquet removal applications. The 14” wide blade extends out nearly 4” and is designed at a specific angle to work more efficiently in cutting and lifting of thick materials. Best suited for the long run, constant use in tile/wood applications for extended life and performance.

**#10-4802 14”Rigid, #10-4652 12”Rigid.** The standard blade for carpet, vinyl or adhesive removal, pre-cutting of the floor is needed.

**#10-4804 6”Rigid, #10-4803 8”Rigid.** Use these blades for difficult removal like, epoxy, rubber floors, sport surfaces, etc. Always position these blades to far left hand side of machine.

**NOTE:** All jobs can vary in difficulty of removal. Whatever blade you are using it may be necessary to take a smaller bite in removal so it is less stressful on the operator as well as the machine. If you have any questions on blade selection or choice of machine, please do not hesitate to call Sinclair Equipment Company or your nearest distributor.

## STANDARD WARRANTY

SINCLAIR EQUIPMENT COMPANY'S tools are warranted to be free of defects in workmanship and materials for a period of one year from the date of original purchase. Should any trouble develop during this one year period, return the complete tool, freight prepaid, to SINCLAIR'S authorized Service Center. If inspection shows the trouble is caused by defective workmanship or materials, SINCLAIR EQUIPMENT COMPANY will repair, or, at its option, replace without charge.

- This warranty does not apply to malfunctions caused by damage, unreasonable use, faulty repairs made by others, or failure to provide recommended maintenance.
- The warranty is void if the product is altered by the original consumer purchaser, or if it is used in a manner not recommended by the manufacturer.
- The warranties do not cover consequential damages or transportation charges incurred with the replacement or repair of SINCLAIR EQUIPMENT COMPANY products.
- Not responsible for lost job or down time.

In no event shall SINCLAIR be liable for any indirect, incidental, or consequential damages from the sale or use of the product. This disclaimer applies both during and after the term of this warranty.

SINCLAIR EQUIPMENT COMPANY disclaims liability for any implied warranties, including implied warranties of "merchantability" and "fitness for a specific purpose", after the one year term of this warranty.

This warranty gives you specific legal rights, and you may have other rights which vary from state to state. Should you have any questions, contact SINCLAIR EQUIPMENT COMPANY at (530) 626-9386.

To obtain warranty service, deliver or send the complete tool, prepaid, to SINCLAIR EQUIPMENT COMPANY. Be sure to include the following information:

- Nature of failure;
- Name and address of distributor where tool was purchased;
- Application of tool when rendered defective; and
- Proof of purchase.

To obtain individual repair parts, contact SINCLAIR EQUIPMENT COMPANY with the following information:

- Tool model number;
- Item part number; and
- Description of part.

